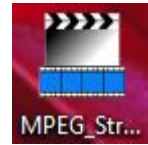
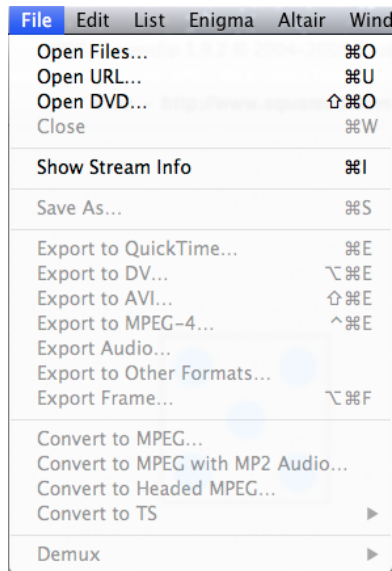


Using MPEG Streamclip to Select Video Clip

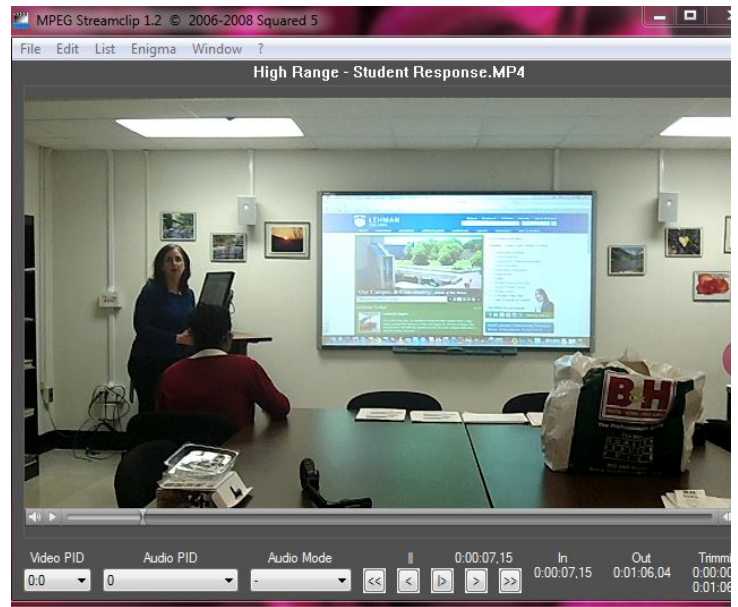
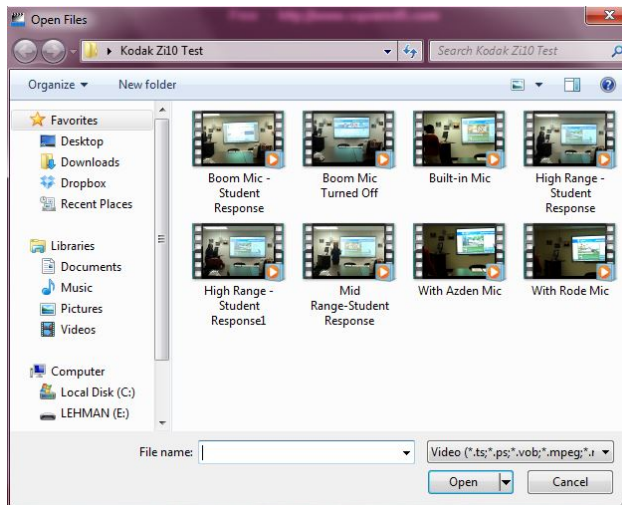
Inserting Video into MPEG Streamclip: Open MPEG Streamclip



> Click File > Open Files



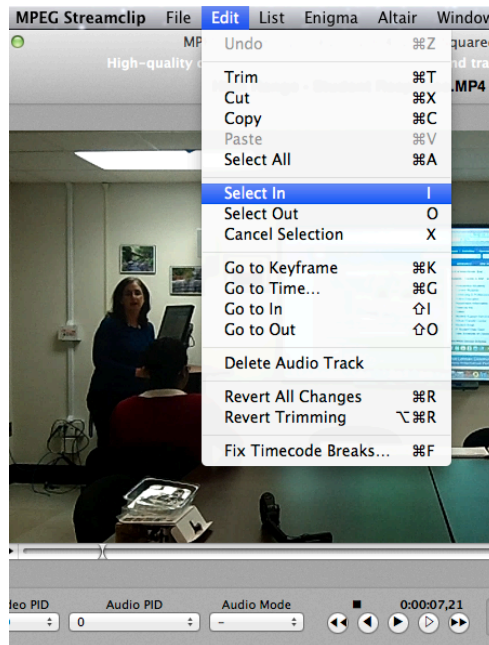
> Select video > Click Open



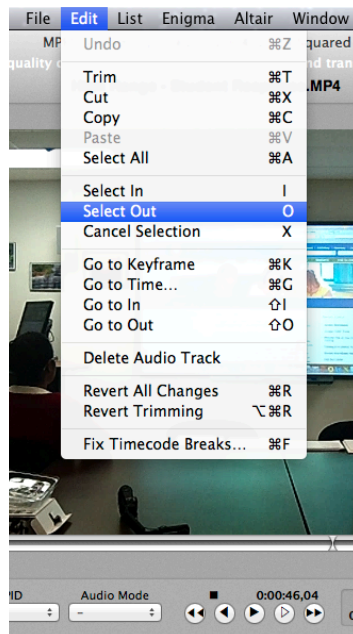
Selecting Video Clip: Drag the playhead to where the clip will start > Edit > Select In



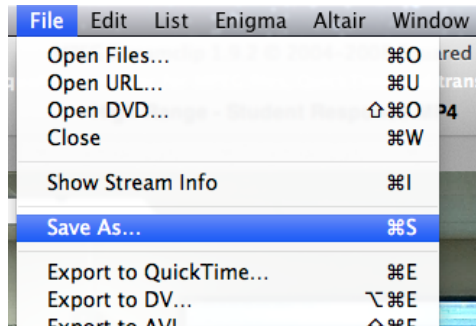
Playhead



> Drag the playhead to where the clip will end > Edit > Select Out

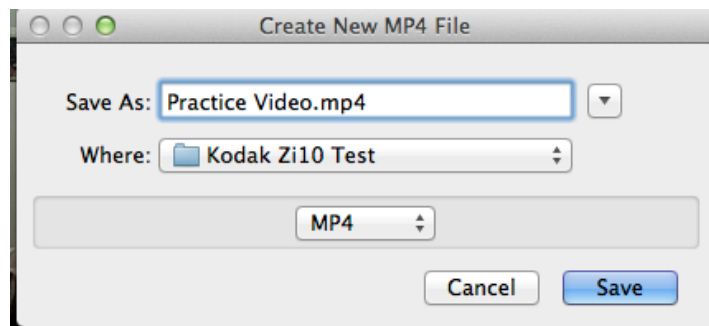


Saving Video clip: File > Save As (**ALERT:** Save AS NEW NAME to keep original)



> Name the clip > Save

Mac



PC

