

LEH353: Studies in the Arts: The History of Art Using the Metropolitan Museum of Art

Artwork Recreation Assignment

Here are our class rules for this optional assignment:

1. You are recreating any artwork of your choice from the Met Museum's collection. The artwork has to come from the Met from any period of art history and any type of art.
2. You are recreating the artwork using yourself, your family members, pets and/or household objects, whatever you have available to you.



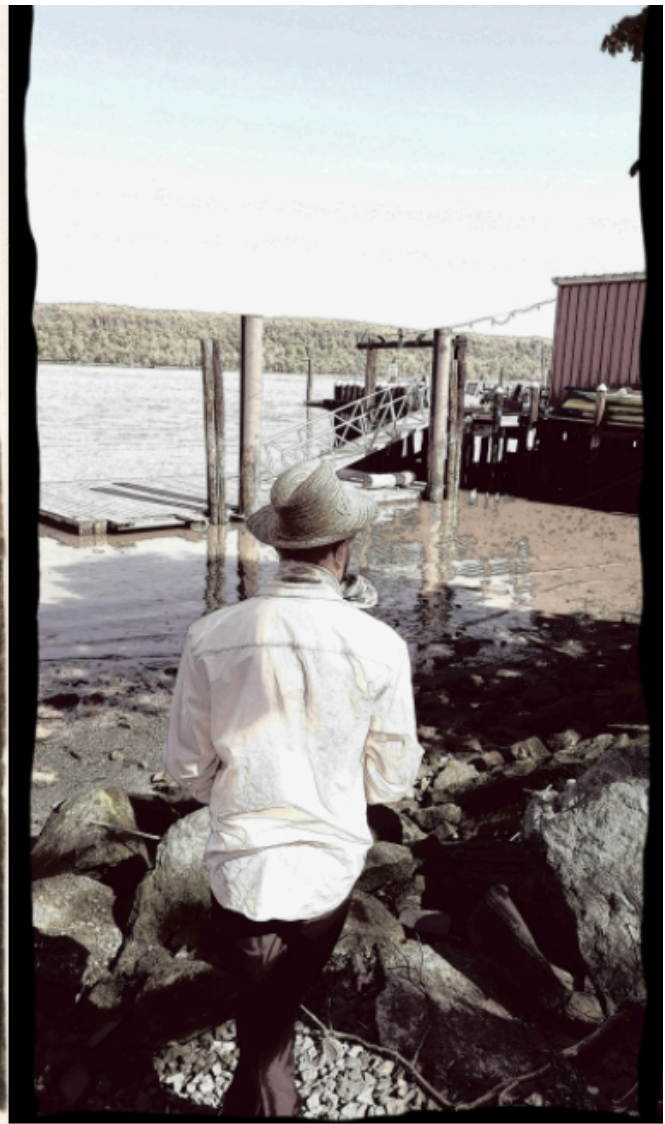
Christine Alvarez: Attributed to Marco d'Oggiono (Italian, Milan ca. 1467-1524 Milan)
Girl with Cherries, ca. 1491-95, Oil on wood; 19 1/4 x 14 3/4 in. (48.9x37.5 cm)



Christine Alvarez: Thomas Sully (American, 1783-1872), *Queen Victoria*, 1838, oil on canvas.



Anthonella Contreras:
Domenico Ghirlandaio (Italian, 1448/49–1494), *Saint Christopher and the Infant Christ*,
fresco painting

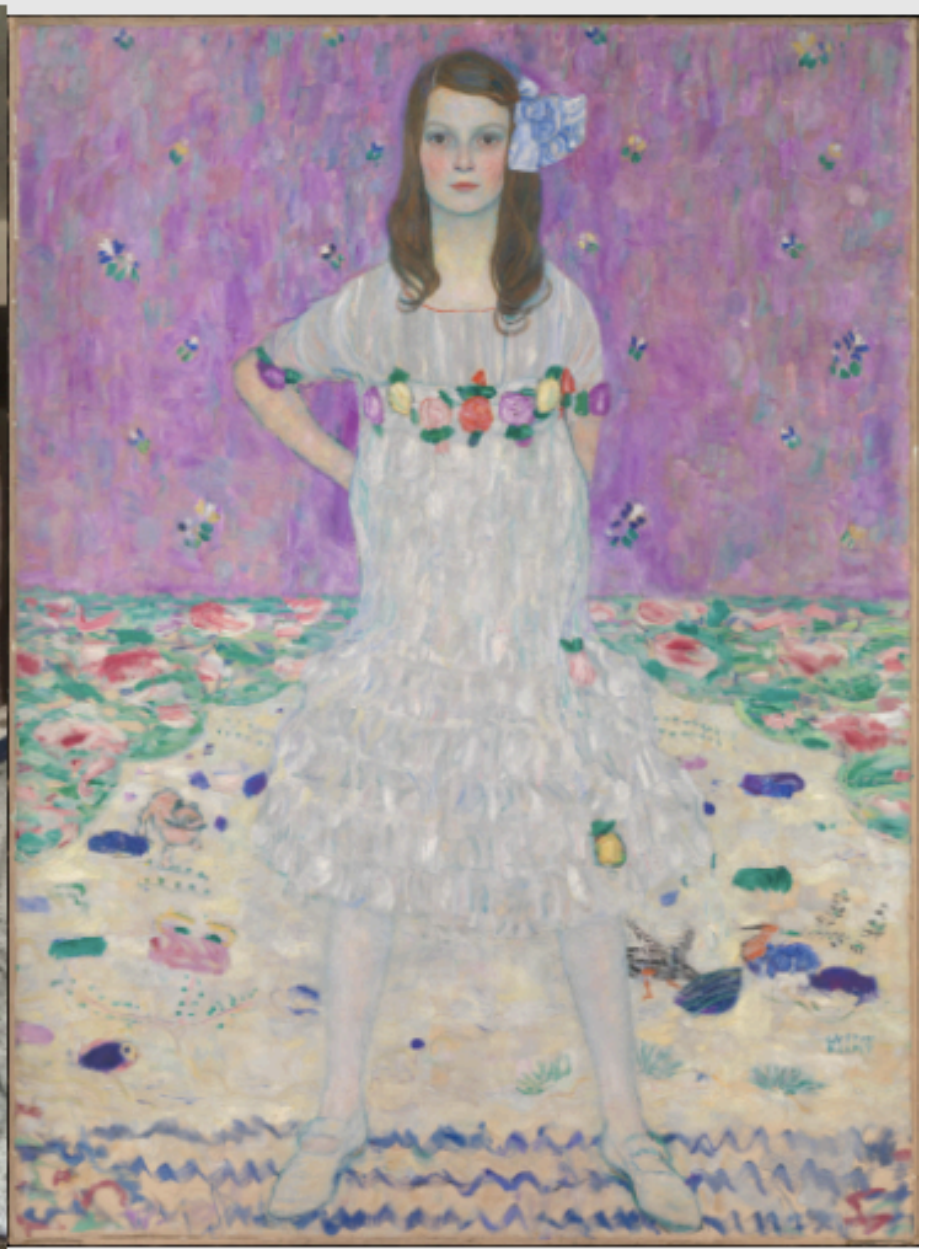


Left: Umberto Boccioni (Italian, 1882-1916), *Young Man on a Riverbank*, 1902, Gouache, charcoal, and pastel on paper drawing

Right: Ciprian Cucu (Romanian-American 2020), *Old Man on the Hudson Riverbank*, 2020, Photograph, Samsung S20 Ultra, Retro filter



Jason Guerrero:
Molder: Johann Friedrich Eberlein (German, 1695–1749), *Harlequin with Bird and Cat*, 1743, porcelain; Meissen Manufactory



Sharon Jordan, Associate Professor, Art History
Gustav Klimt, *Mäda Primavesi*, 1912-1913, oil on canvas.



Kayla Ogando:

Paul Cézanne, *Still Life with Jar, Cup, and Apples*, ca. 1877, oil on canvas



Alexjandro Mendoza
Max Ernst (French (born Germany), 1891–1976)
Portrait of Gala Éluard, 1924, oil on canvas



Farzana Rahman
Auguste Renoir
(French, 1841–1919),
*A Waitress at Duval's
Restaurant*, ca. 1875,
oil on canvas





Pamela Salazar
Andy Warhol
(American, 1928–
1987), *Photobooth
Self-Portraits*, ca.
1963, Gelatin silver
prints



Indiana Santana
Dante Gabriel Rossetti (British, 1828–1882), *Lady Lilith*, 1867,
watercolor and gouache

ARH335: Impressionism and Post-Impressionism

Artwork Recreation Assignment

Here are our class rules for this optional assignment:

1. You are recreating any artwork of your choice from the period of time covered by this class, roughly 1850 - 1900.
2. You are recreating the artwork using yourself, your family members, pets and/or household objects, whatever you have available to you.



Kathryn Fournier
Henri de Toulouse-Lautrec (French, 1864–
1901), *Divan Japonais*, 1892–93, lithograph
printed in four colors. Met Museum, New York



Debra Graves

Édouard Manet, *A Bar at the Folies-Bergère*, 1882, oil on canvas

Courtauld Gallery, London



Dauris Martinez
John Everett
Millais, *Ophelia*,
1851-1852,
oil on canvas.
Tate Britain,
London





Joddys Tollinchi

Édouard Manet, *Young woman with a pink shoe (Portrait of Berthe Morisot)*, 1868, oil on canvas. Hiroshima Museum of Art, Hiroshima, Japan