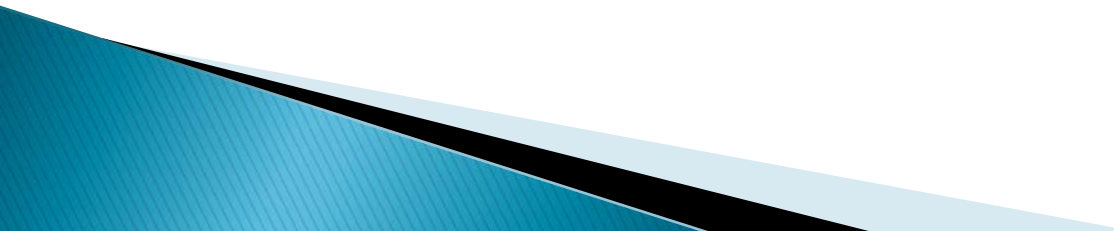


The Middle States' Self- study Process

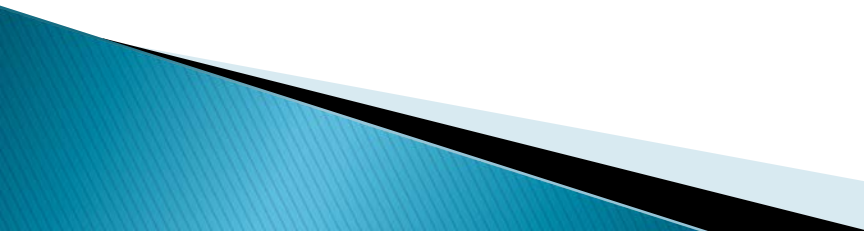
Chair Dean Pettipiece
For
General Faculty
September 21, 2016

YEAH! It's that time again . . .


Time for the MSCHE Self-study process. And this is a GOOD TIME. WHY? Because we use it to:

- ▶ Investigate our own practices and policies for relevance to our mission of student learning and success.
 - ▶ Align our resources with revised needs and goals.
 - ▶ Determine the future of our institution, faculty, students, and staff.
 - ▶ Ensure our practices are sustainable and successful.
- 

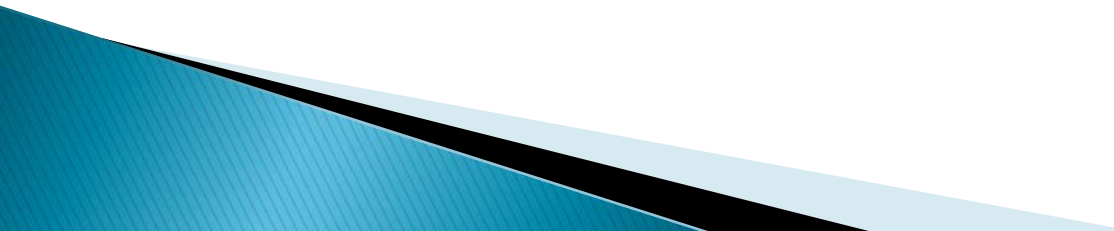
So where are we in the process and how did we get here?

- ▶ Technically speaking, MSCHE Self-study begins once the previous Periodic Review Report is acknowledged and evaluated. At that time, we have a clear idea of where we stand with the Standards of Excellence.
 - ▶ As we know, our Periodic Review Report was outstanding, and our Institution received two commendations, even though we also had areas to work on.
 - ▶ HOWEVER . . .
- 

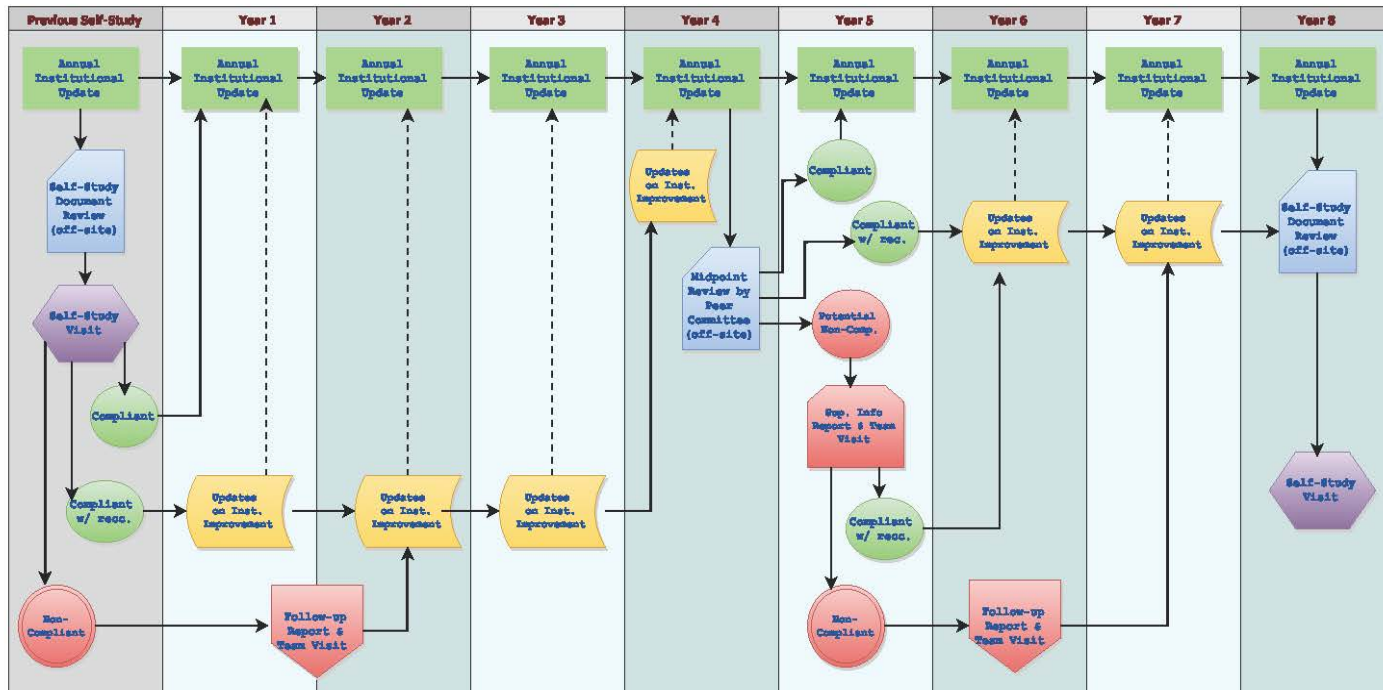
There are new standards for Reaffirmation of Accreditation . . .

- ▶ **Standard I: Mission and Goals**
 - ▶ **Standard II: Ethics and Integrity**
 - ▶ **Standard III: Design and Delivery of the Student Learning Experience**
 - ▶ **Standard IV: Support of the Student Experience**
 - ▶ **Standard V: Educational Effectiveness Assessment**
 - ▶ **Standard VI: Planning, Resources, and Institutional Improvement**
 - ▶ **Standard VII: Governance, Leadership, and Administration . . .**
- 

And a new timeline . . .

- ▶ An eight-year accreditation cycle.
 - ▶ Annual Institutional Updates.
 - ▶ A Mid-Point Peer Review of information already submitted in several annual updates.
- 

What does this look like?



What does this mean?

- ▶ While we will still go through with our decennial self-study in 2018, we will then begin the new 8-year cycle including annual reports.
- ▶ These annual reports require *actions* in response to institutional, budgetary, curricular, and student changes, meaning that they are much more like mini self-studies each year. Shortcomings found then require address and follow up with a potential team visit.
- ▶ The mid-point report is NOT done by the Institution. Instead, the annual reports and any subsequent actions are reviewed by a team off-site.

For now, we “keep calm and carry on!”

- ▶ with our regularly scheduled self-study.


And this is already well underway.

Preparation for the Self-Study 2018-2019

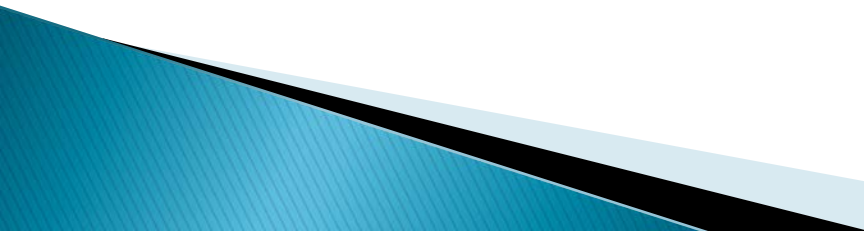
Spring 2016

- ▶ MSCHE chair offers workshops on accreditation and requisite Strategic Planning, Assessment and Resource Allocation
- ▶ Letters of invitation for Steering Committee sent by President.
 - Preliminary website designed on Institutional Assessment page.

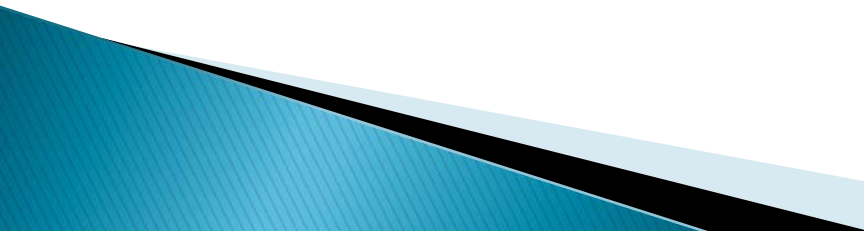
First Phase: Assignments and Instruction on The Standards

- Fall 2016: First meeting of the Steering Committee: charged by Provost; working groups finalized.
 - Steering Committee and Working Groups meet for large group discussion in East Dining room. Co-chairs facilitate. Groups present work to date.
 - Chairs of Working Groups meet with Steering Committee for strategizing.
 - Working Groups meet and are given initial leading questions by co-chairs.
 - Groups meet to discuss questions, add new questions and begin compiling requests for documents.
 - Co-chairs provide collated report on work to date to Steering Committee and Working Group chairs.
 - This group meets to discuss next steps and needs related to additional resources (documents, data, personnel).
 - Information relayed to the President and the General Faculty.
- 

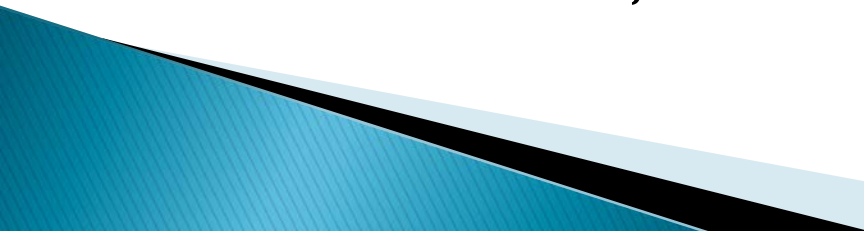
Second Phase: Continued Investigation Fall 2016 and Spring 2017

- ▶ Working Groups investigate vetted questions related to the Standards;
 - ▶ Working group members undertake research, draft preliminary findings;
 - ▶ Findings are collated by the chair of the working groups and relayed to Steering Committee;
 - ▶ Initial draft of findings discussed by the Steering Committee.
- 

Third Phase: Action Plan Drafted by Steering Committee: late Spring/early Summer 2017

- ▶ Findings typically reveal items that must be addressed prior to the writing of the self-study—the action plan provides the methodology and responsibility for making these changes.
 - ▶ Follow up surveys are also often needed after initial working investigation—answers to these surveys provide needed material for the self-study.
- 


Fourth Phase: Self-study Design and Draft: Fall 2017

- ▶ Overall design of self-study proposed by Steering Committee and submitted to the Provost for input. Provost discusses with President for final decision.
 - ▶ Design approved, draft begun.
 - ▶ Images and tables/charts/graphs solicited for inclusion.
 - ▶ Self-study draft completed and distributed for revisions, additions, editing.
- 

Final Phase: Submission of Final Draft to MSCHE in addition to Verification of Compliance Documents

- ▶ Verification of Compliance should be completed by Institutional Research previous to submission of Self-study.
- ▶ Support needed for creation of PDF in Adobe with embedded bookmarks, images, appendices.
- ▶ Document room preparation.

Plans for visiting team, including locations for their work, lunches, swag bags, etc.



Questions?